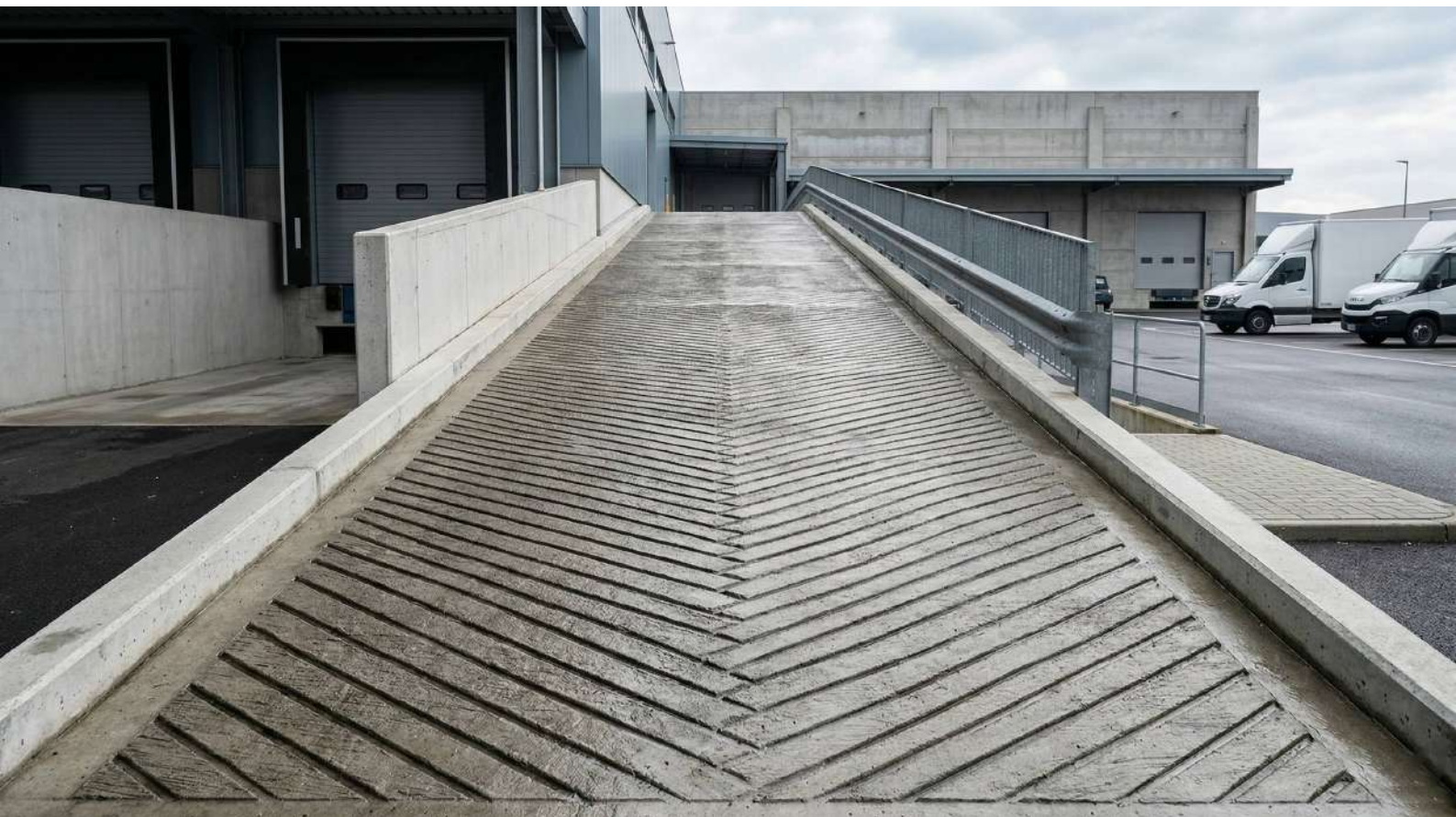










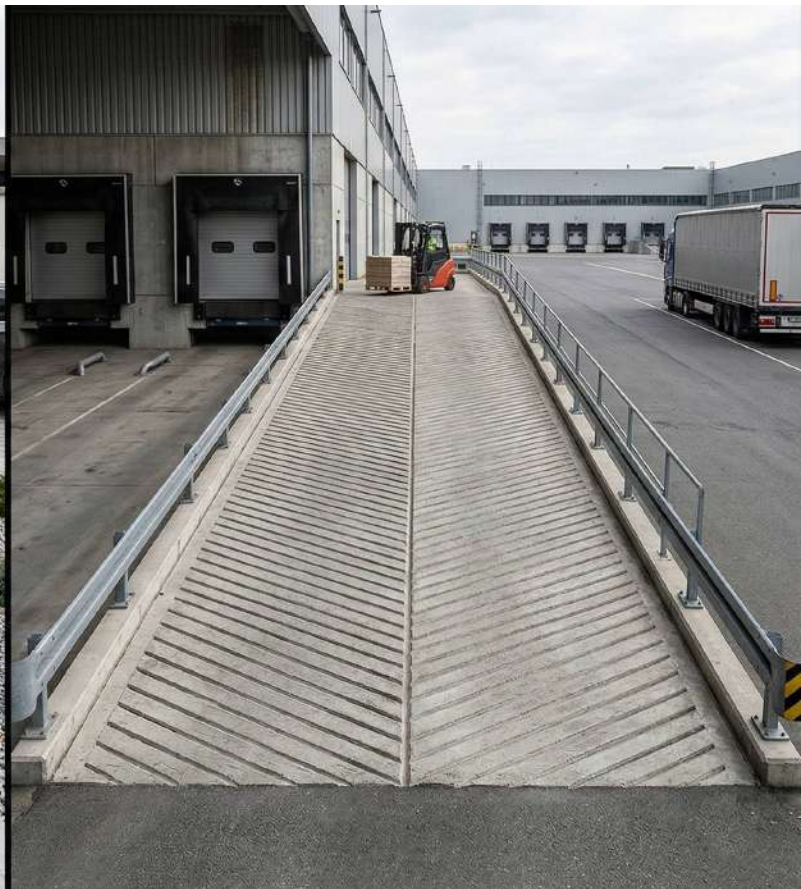
FRATELLI KOLA

Rampe Antiscivolo in Calcestruzzo



Confronto Tecnico: Rampa Residenziale vs Industriale

Caratteristica	Residenziale	Industriale
Pendenza tipica	15-20%	5-12%
Traffico previsto	 Autovetture, pedoni  	Carrelli elevatori,  automezzi pesanti 
Armatura	Rete elettrosaldata leggera 	Rete rinforzata o fibrorinforzata 
Finitura	Pettinata o spina di pesce	Spina di pesce con quarzo tecnico
Larghezza	2,5-4 m	4-8 m
Spessore minimo	10 cm	15-20 cm



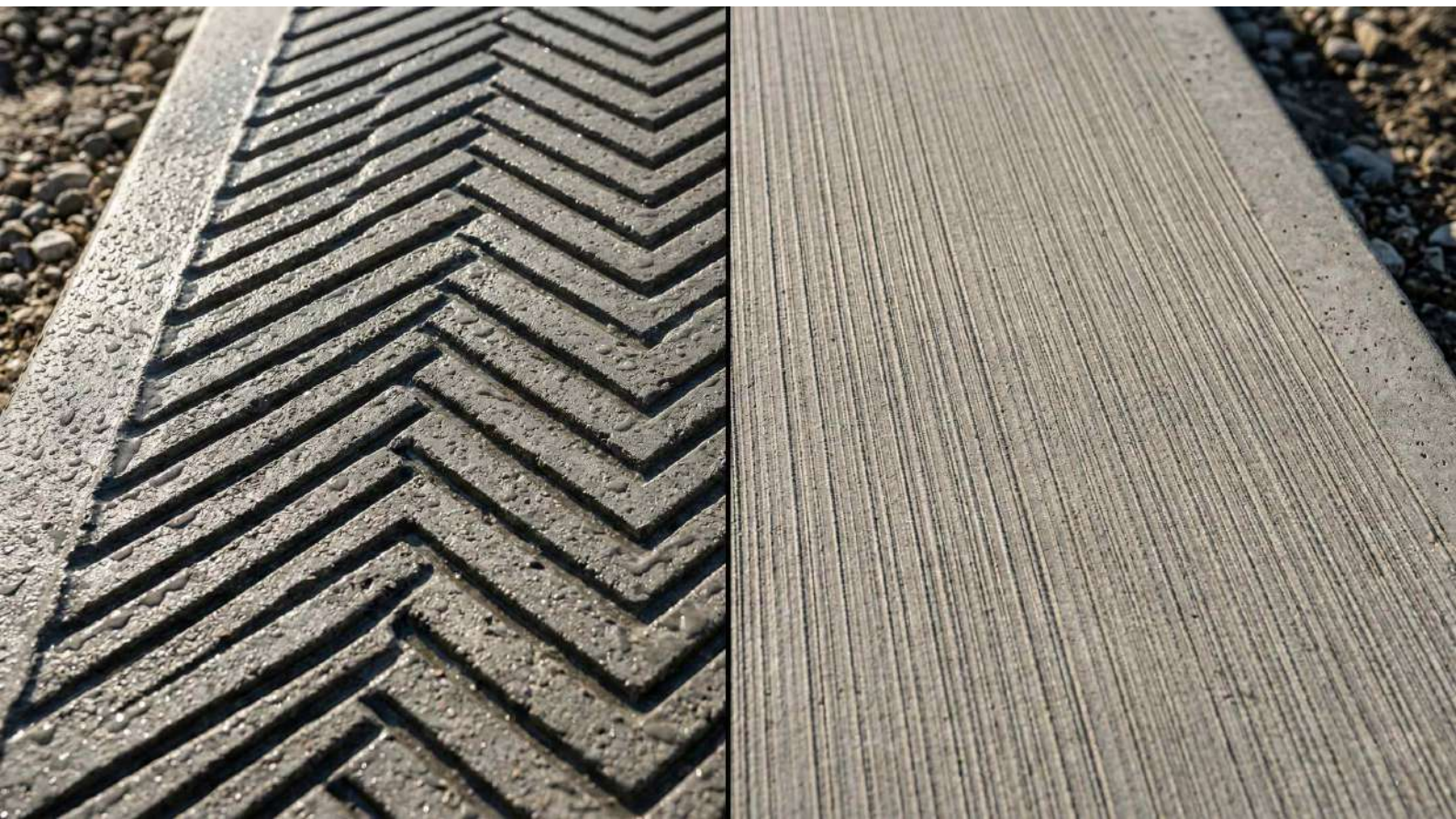




Finiture a confronto

Finitura	Contesto ideale	Aderenza bagnato	Difficoltà esecuzione
Spina di pesce	Esterno, traffico pesante	Alta	Media
Pettinata/scopata	Interno, traffico leggero	Media	Bassa





SVILUPPO RESISTENZA

Tempo	Resistenza raggiunta	Traffico ammesso
24-48 ore	 ~20%	Nessun carico
7 giorni	 ~70%	Solo pedonale leggero
28 giorni	 100%	Traffico a pieno carico